

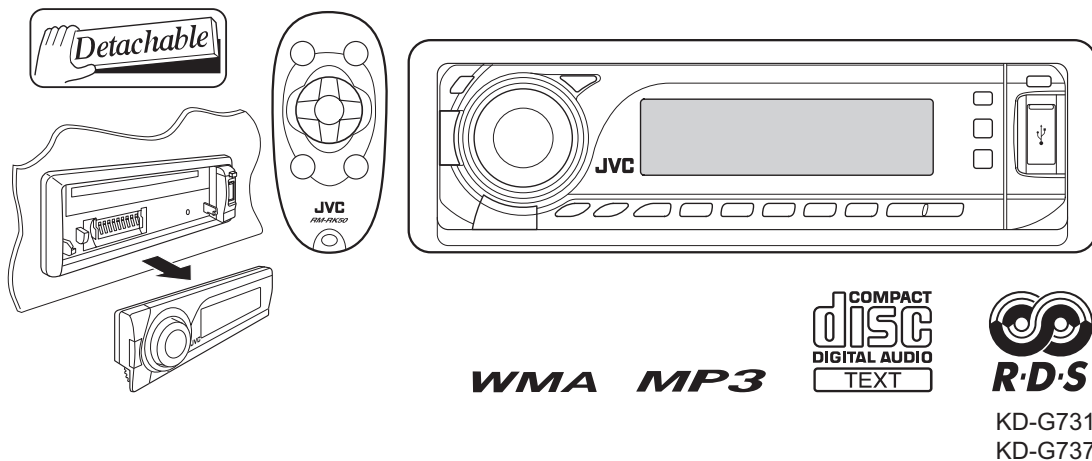
# JVC

## SCHEMATIC DIAGRAMS

### CD RECEIVER

**KD-G731E, KD-G731EX, KD-G731EU**  
**KD-G731EY, KD-G734UI, KD-G735U**  
**KD-G735UN, KD-G735UH, KD-G735UT**  
**KD-G737EE, KD-G738UF**

CD-ROM No.SML200702



Lead free solder used in the board (material : Sn-Ag-Cu, melting point : 219 Centigrade)  
Lead free solder used in the board (material : Sn-Cu, melting point : 230 Centigrade)

### Contents

|                                   |          |
|-----------------------------------|----------|
| Block diagram .....               | 2-1      |
| Standard schematic diagrams ..... | 2-2      |
| Printed circuit boards .....      | 2-6 to 7 |

## Safety precaution

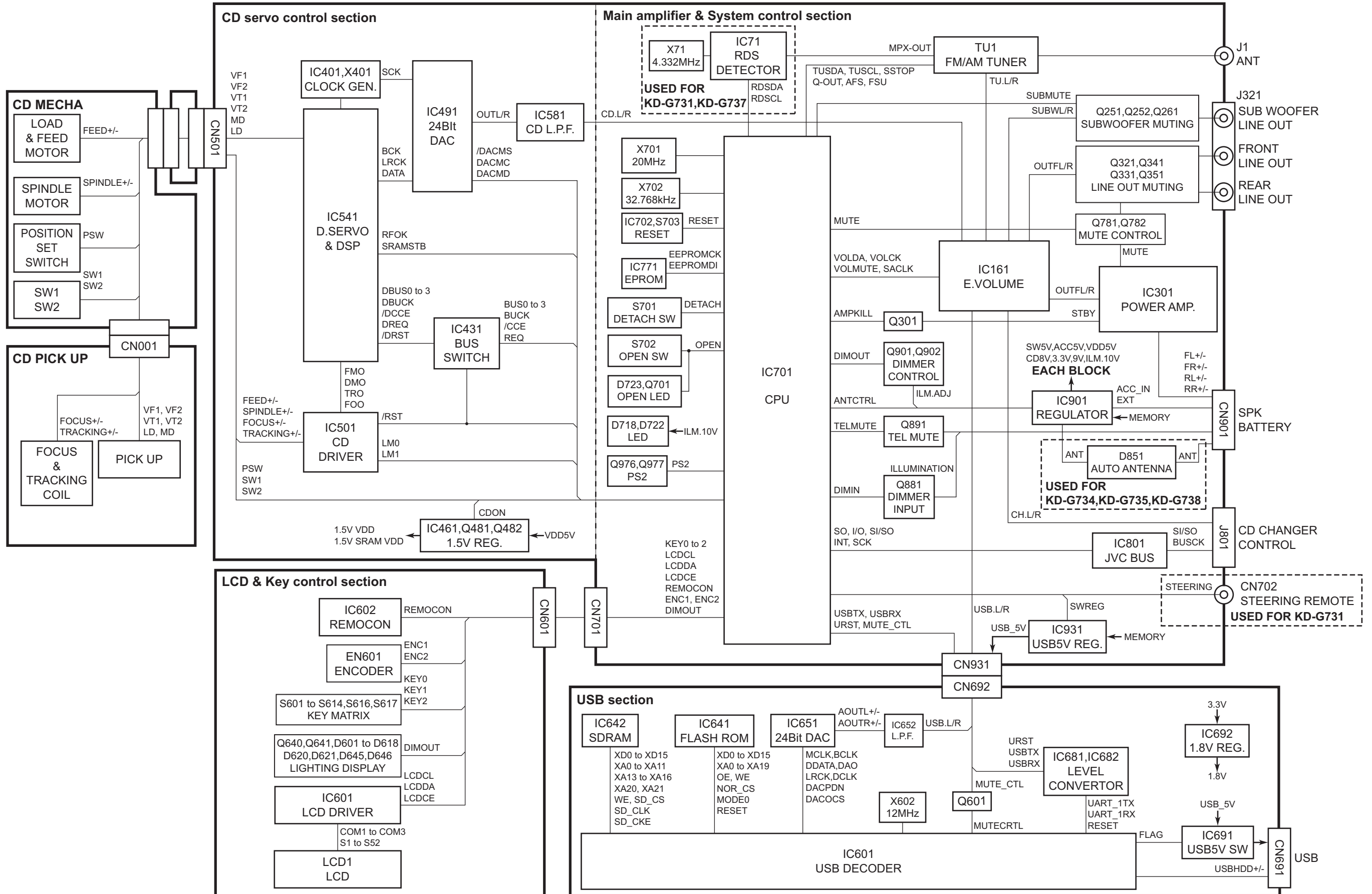


**CAUTION** Burrs formed during molding may be left over on some parts of the chassis. Therefore, pay attention to such burrs in the case of performing repair of this system.



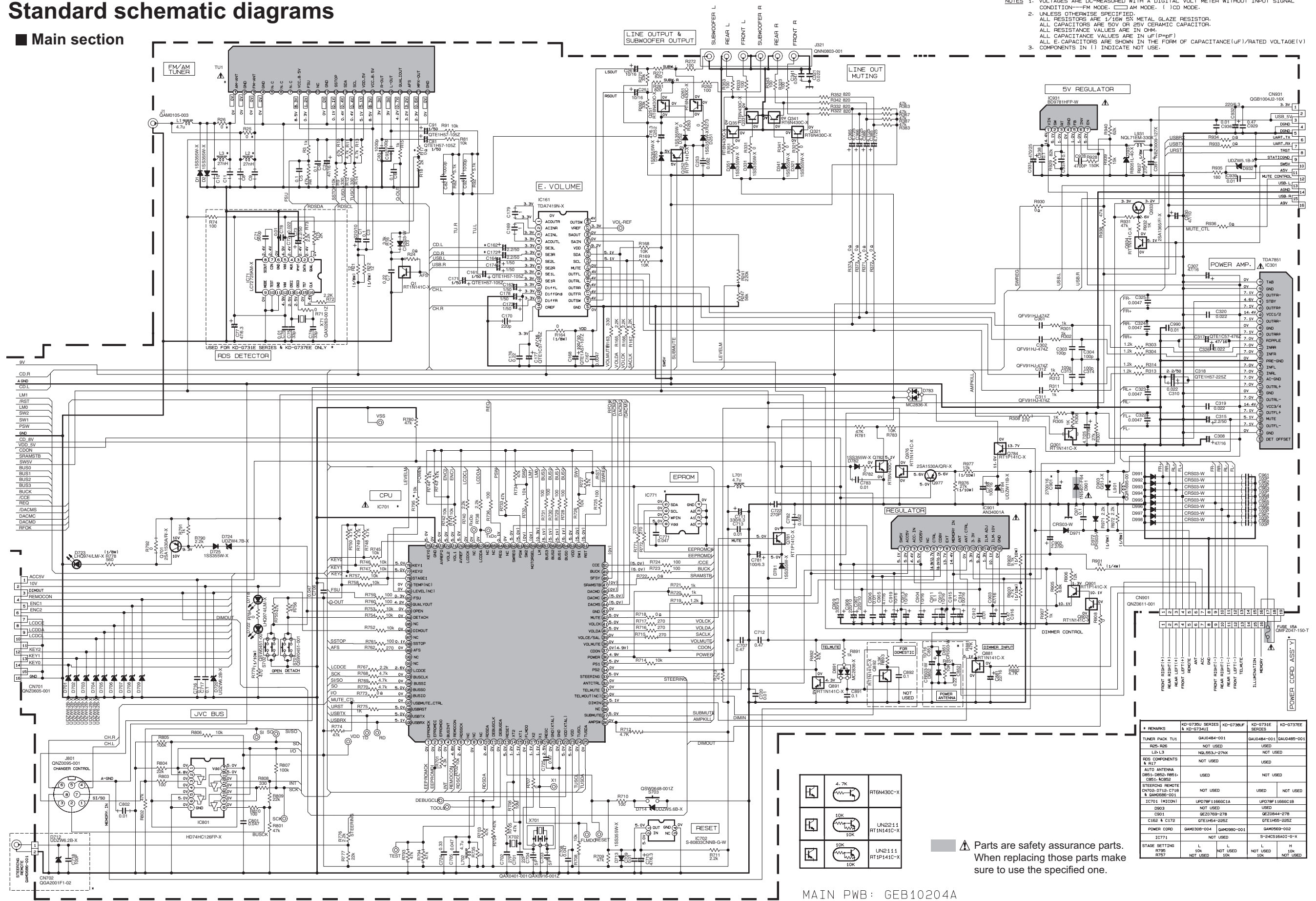
**CAUTION** Please use enough caution not to see the beam directly or touch it in case of an adjustment or operation check.

# Block diagram



# Standard schematic diagrams

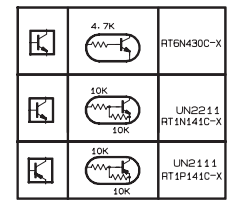
## Main section



- NOTES
- VOLTAGES ARE DC-MEASURED WITH A DIGITAL VOLT METER WITHOUT INPUT SIGNAL. CONDITION—FM MODE. ( ) AM MODE. ( ) CD MODE.
  - UNLESS OTHERWISE SPECIFIED:  
ALL RESISTORS ARE 1/16W 5% METAL GLAZE RESISTOR.  
ALL CAPACITORS ARE 50V OR 25V CERAMIC CAPACITOR.  
ALL RESISTANCE VALUES ARE IN OHM.  
ALL CAPACITANCE VALUES ARE IN UF (p=PF)  
ALL E. CAPACITORS ARE SHOWN IN THE FORM OF CAPACITANCE(UF)/RATED VOLTAGE(V)
  - COMPONENTS IN ( ) INDICATE NOT USE.

| REMARKS                         | KD-6730U SERIES & KD-6730U1 | KD-6738UF      | KD-6731E        | KD-6737EE |
|---------------------------------|-----------------------------|----------------|-----------------|-----------|
| TUNER PACK TU1                  | GAU0484-001                 | GAU0484-001    | GAU0485-001     |           |
| RES. R8R                        | NOT USED                    | NOT USED       | NOT USED        |           |
| L2-L3                           | NL553-P-97NX                |                |                 |           |
| RDS COMPONENTS & R17            | NOT USED                    | USED           |                 |           |
| AUTO ANTENNA                    |                             |                |                 |           |
| D851, D852, D851, C851, C852    | USED                        | NOT USED       |                 |           |
| STEREO REMOTE                   |                             |                |                 |           |
| DN703, D712, C718 & GAN0686-001 | NOT USED                    | USED           | NOT USED        |           |
| IC701 (HSDN1)                   | LPD78F1166G01A              | LPD78F1166G01B | USED            |           |
| C903                            | NOT USED                    |                |                 |           |
| C901                            | QE20769-278                 | QE20844-278    |                 |           |
| C162 & C172                     | OTE1H57-225Z                | OTE1H57-225Z   |                 |           |
| POWER CORD                      | GAN0308-004                 | GAN0980-001    | GAN0669-002     |           |
| IC771                           | NOT USED                    |                | 5-24CS16A01-G-X |           |
| STAGE SETTING                   |                             |                |                 |           |
| R795                            | L                           | L              | L               | H         |
| R797                            | 10K                         | NOT USED       | 10K             | NOT USED  |

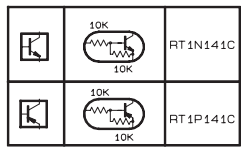
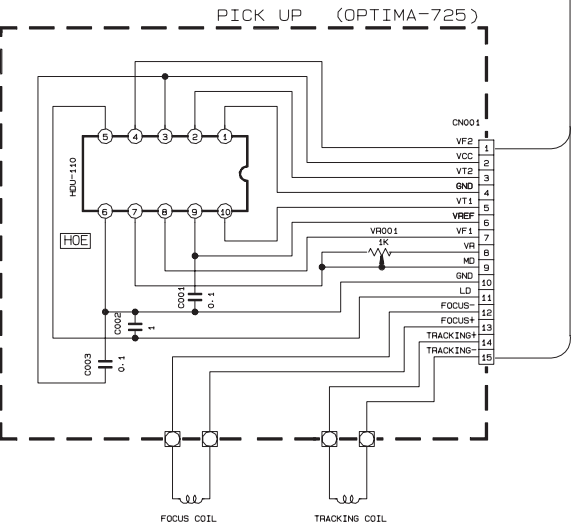
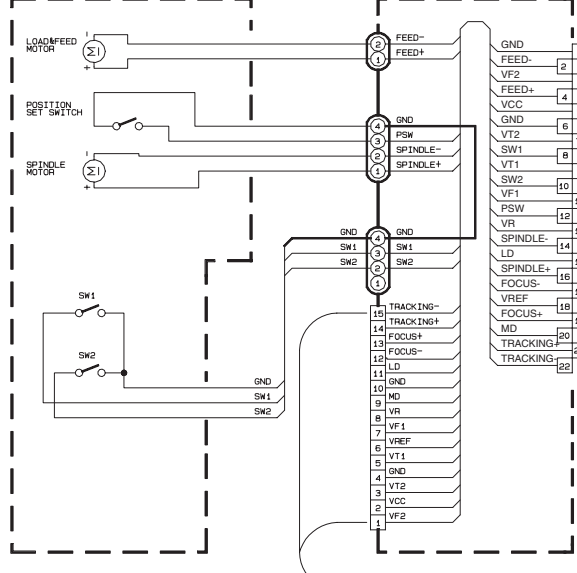
**⚠ Parts are safety assurance parts.**  
When replacing those parts make sure to use the specified one.



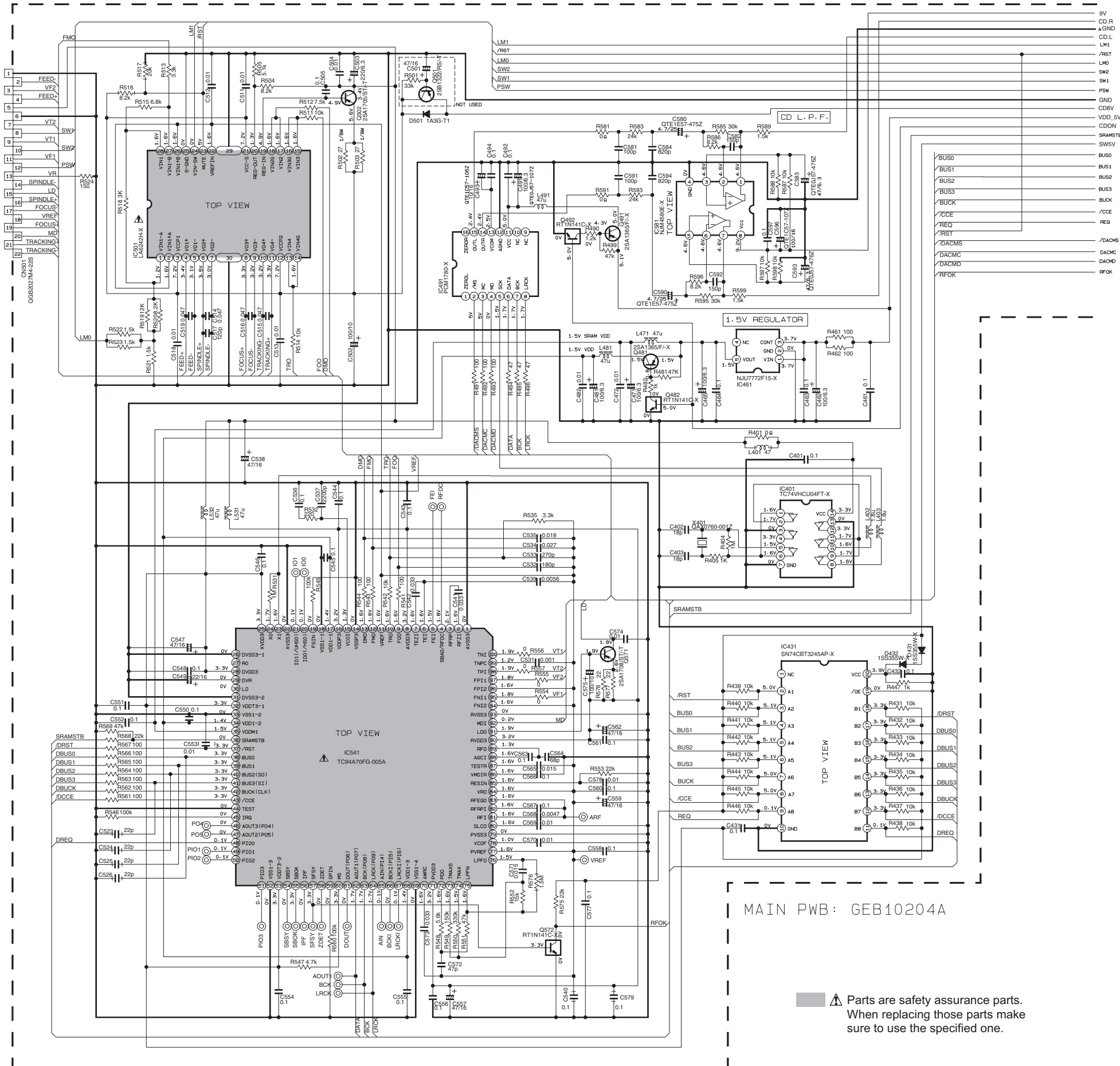
MAIN PWB: GEB10204A

# CD section

MECHA: QAL0812-003



NOTES:  
 1. VOLTAGE ARE DC-MEASURED WITH A DIGITAL VOLTMETER WITHOUT INPUT SIGNAL CONDITION --- CD MODE.  
 2. UNLESS OTHERWISE SPECIFIED.  
 ALL RESISTOR ARE 1/16W ±5%METAL GLAZE RESISTOR.  
 ALL CAPACITOR ARE 50V OR 25V CERAMIC CAPACITOR.  
 ALL RESISTANCE VALUES ARE IN OHM  
 ALL CAPACITANCE VALUES ARE IN μF(p=PF).  
 ALL INDUCTANCE VALUES ARE IN μH  
 ALL E. CAPACITORS ARE SHOWN IN THE FORM OF CAPACITANCE(μF/RATED VOLTAGE(V))



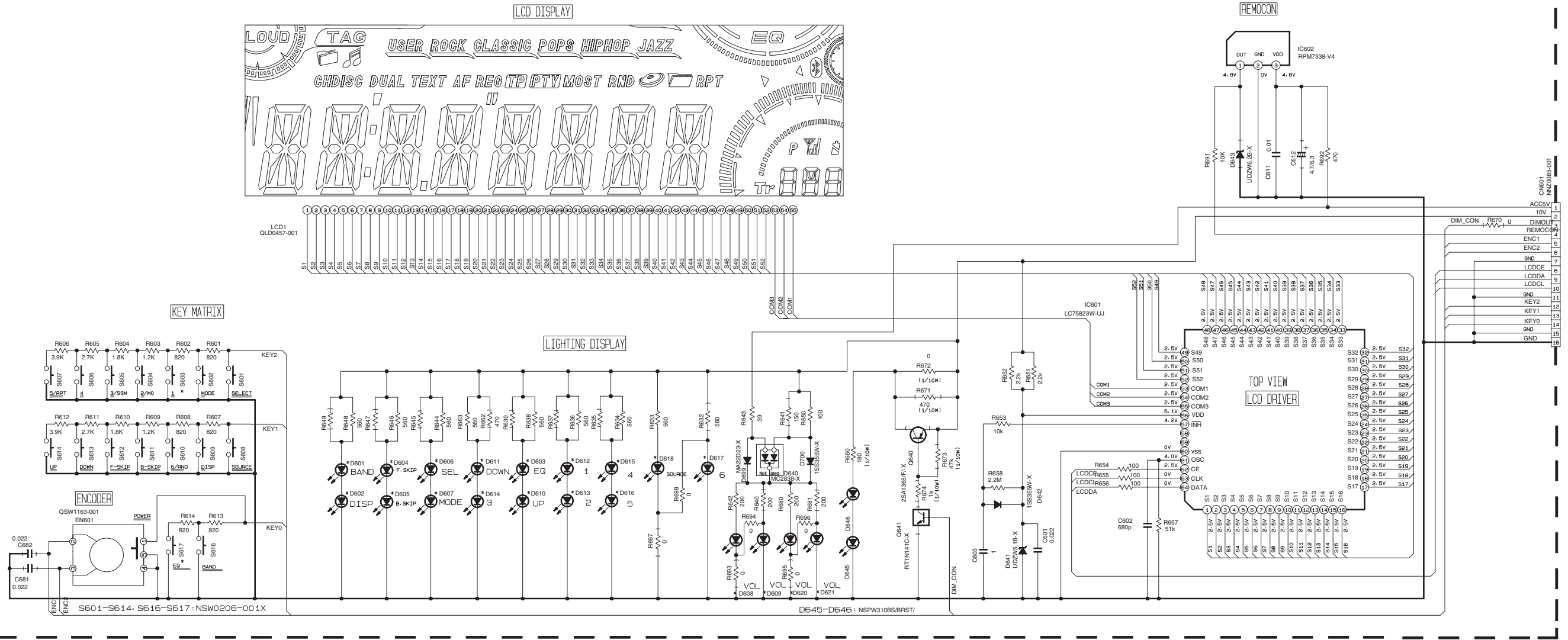
MAIN PWB: GEB10204A

▲ Parts are safety assurance parts.  
 When replacing those parts make sure to use the specified one.

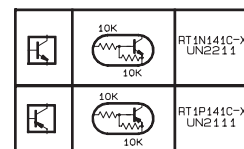


■ LCD and Key control section

SW PWB : GEB10213A



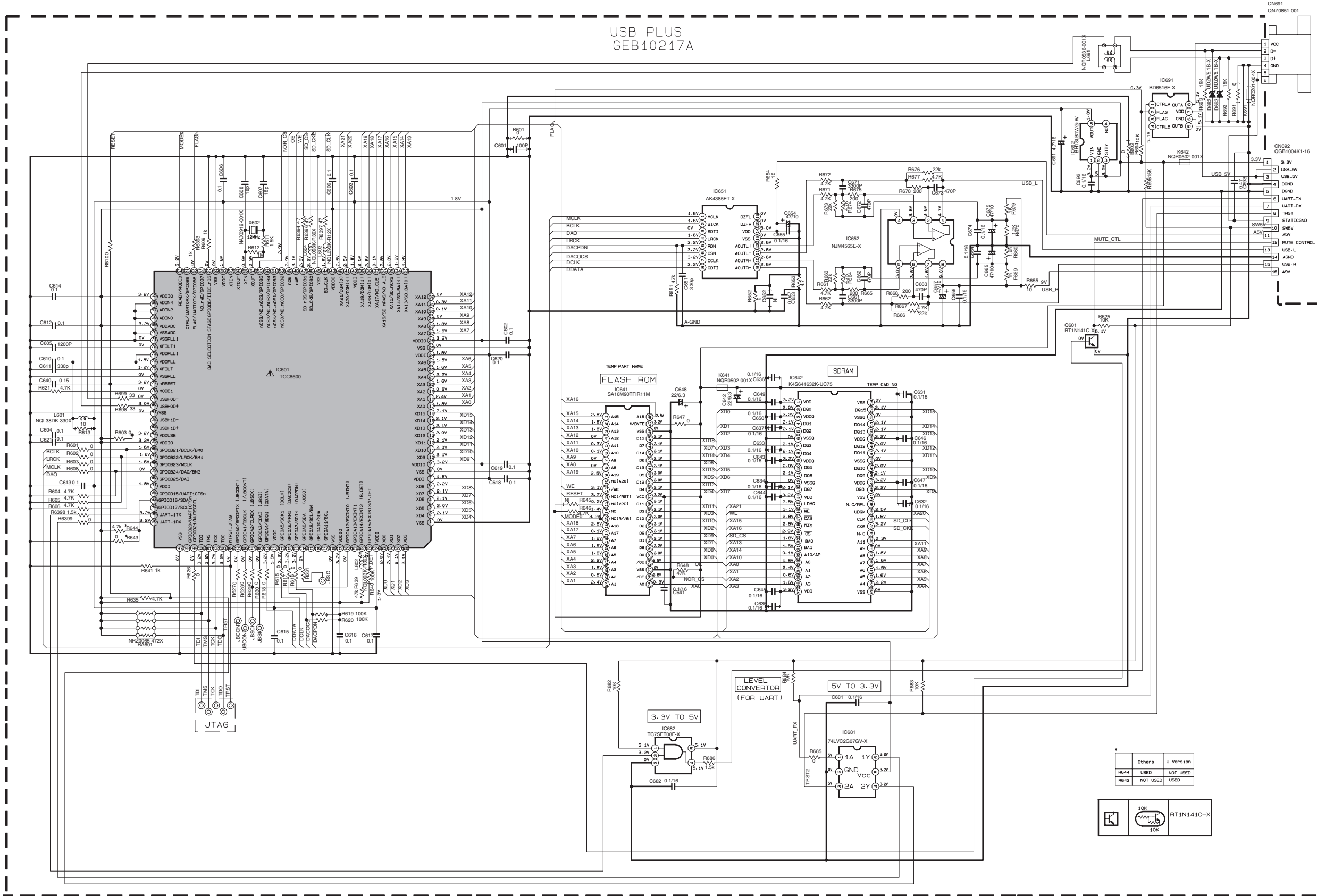
|                         |  |                                 |
|-------------------------|--|---------------------------------|
| *<br>REMARKS            | KD-G735U<br>SERIES<br>KD-G734UI<br>KD-G738UF | KD-G731E<br>SERIES<br>KD-G737EE |
| S603, D612              | 1  | 1/EQ                            |
| S617, D603              | EQ   | TP                              |
| D601-D618<br>D620, D621 | LHQ974/LM/-X                                 | LSQ971/KL/-X                    |



NOTES

1. VOLTAGES ARE DC-MEASURED WITH A DIGITAL VOLT METER WITHOUT INPUT SIGNAL.
2. UNLESS OTHERWISE SPECIFIED.  
ALL RESISTORS ARE 1/16W METAL GLAZE RESISTORS.  
ALL CAPACITORS ARE 50V OR 25V CERAMIC CAPACITOR.  
ALL RESISTANCE VALUES ARE IN OHM.  
ALL CAPACITANCE VALUES ARE IN uF (P=pF)  
ALL E-CAPACITORS ARE SHOWN IN THE FORM OF CAPACITANCE(uF)/RATED VOLTAGE(V)  
T --- TANTALUM CAPACITOR.
3. COMPONENTS IN ( ) INDICATE NOT USE.

■ USB connection section



- NOTES
1. VOLTAGES ARE DC-MEASURED WITH A DIGITAL VOLT METER WITHOUT INPUT SIGNAL. CONDITION --- USB MODE.
  2. UNLESS OTHERWISE SPECIFIED.
    - ALL RESISTORS ARE 1/10W OR 1/8W OR 1/4W ±5% METAL GLAZE RESISTOR.
    - ALL CAPACITORS ARE 50V OR 25V OR 16V CERAMIC CAPACITOR OR 50V MYLAR CAPACITOR.
    - ALL RESISTANCE VALUES ARE IN Ω(MΩ).
    - ALL CAPACITANCE VALUES ARE IN nF(pF).
    - ALL CAPACITORS ARE SHOWN IN THE FORM OF CAPACITANCE(μF)/RATED VOLTAGE (V).

▲ Parts are safety assurance parts. When replacing those parts make sure to use the specified one.

|      | Others   | U Version |
|------|----------|-----------|
| R644 | USED     | NOT USED  |
| R643 | NOT USED | USED      |

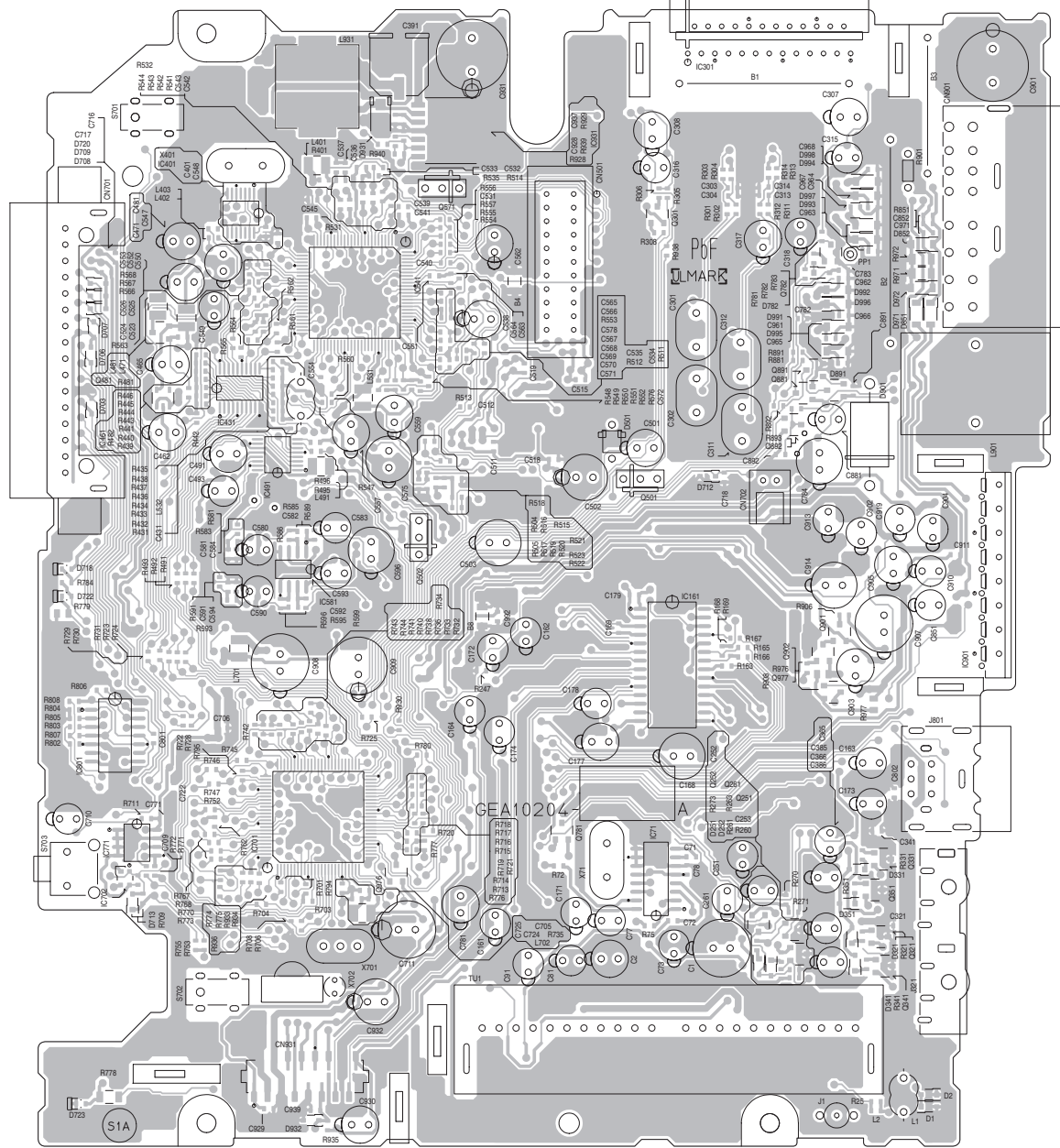
|     |            |
|-----|------------|
| 10K | RT1N141C-X |
| 10K |            |

# Printed circuit boards

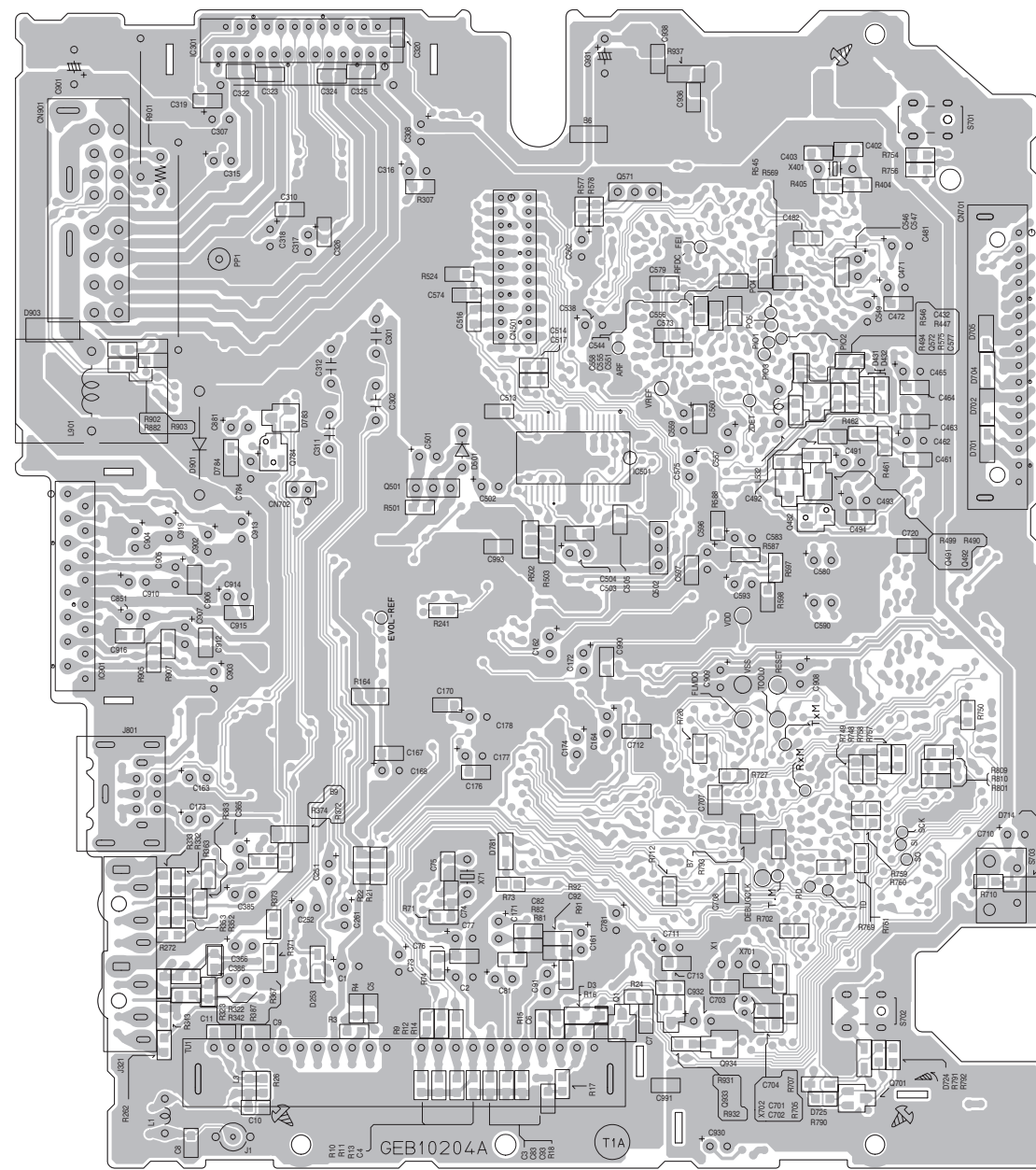
■ **Main board** Lead free solder used in the board (material : Sn-Ag-Cu, melting point : 219 Centigrade)

Lead free solder used in the board (material : Sn-Cu, melting point : 230 Centigrade)

forward side



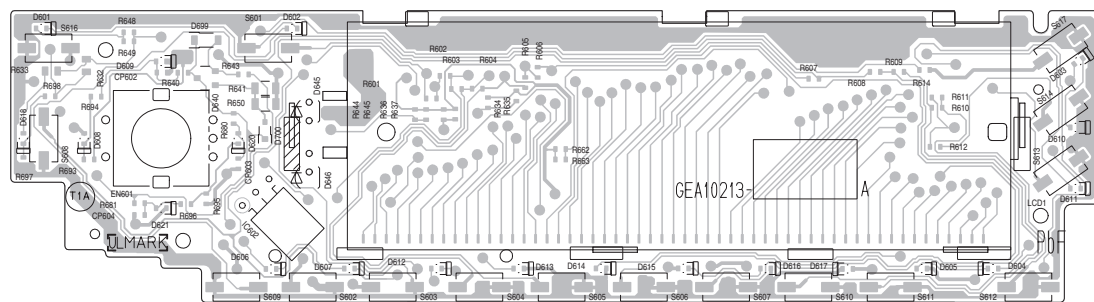
reverse side



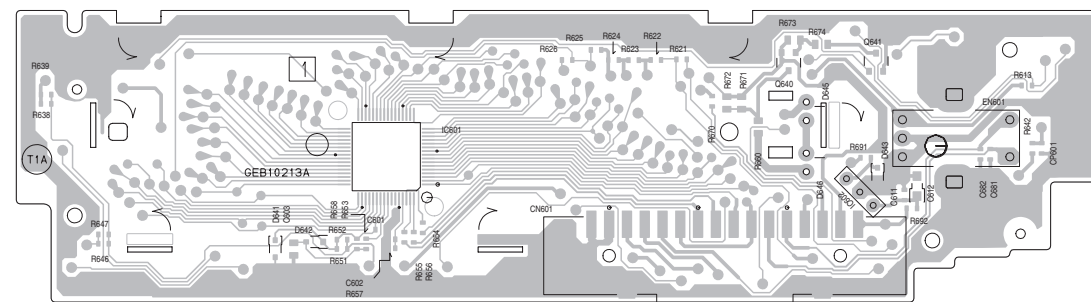
■ **Switch board** Lead free solder used in the board (material : Sn-Ag-Cu, melting point : 219 Centigrade)

Lead free solder used in the board (material : Sn-Cu, melting point : 230 Centigrade)

forward side



reverse side



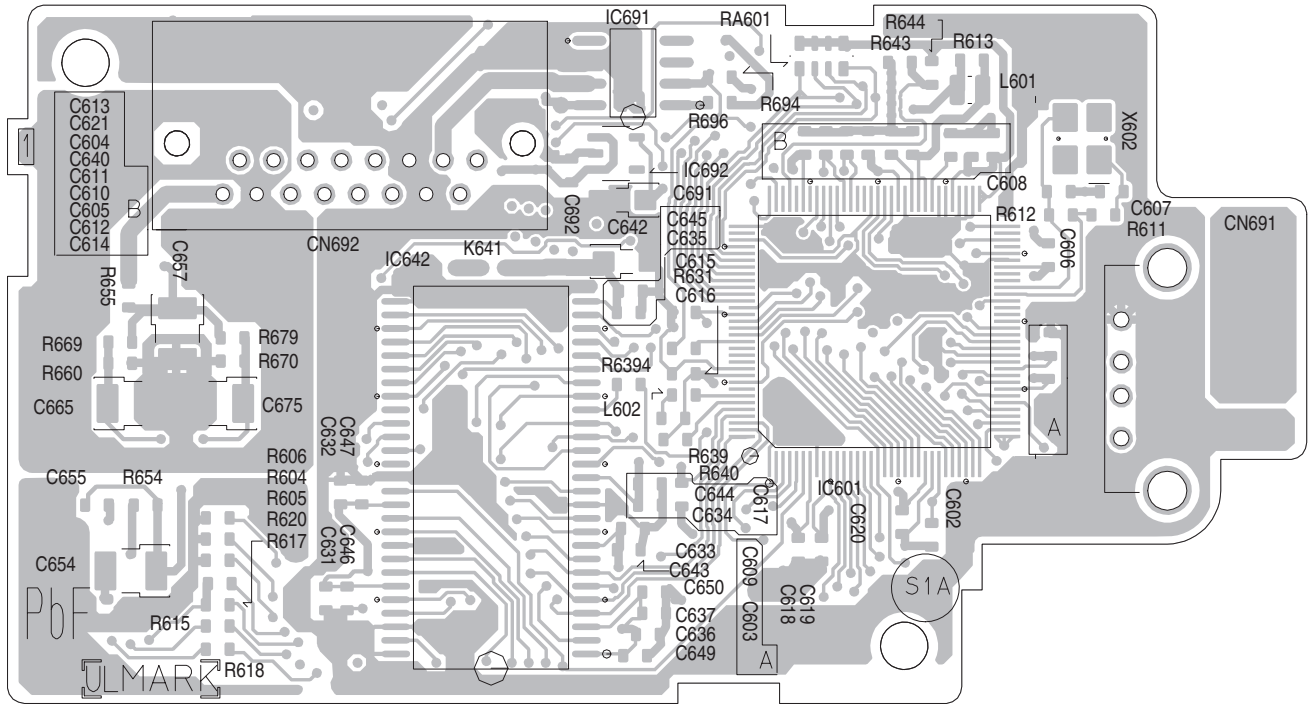


**USB board**

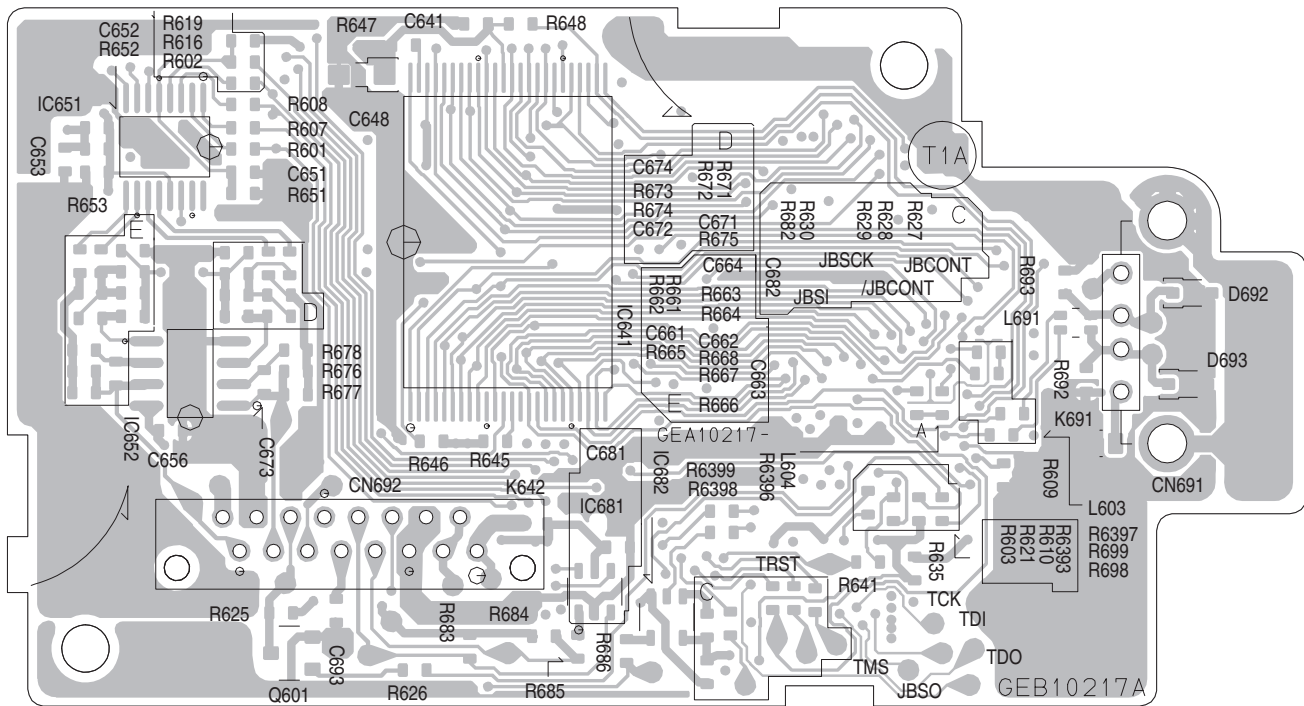
Lead free solder used in the board (material : Sn-Ag-Cu, melting point : 219 Centigrade)

Lead free solder used in the board (material : Sn-Cu, melting point : 230 Centigrade)

forward side



reverse side



**JVC**

**Victor Company of Japan, Limited**

Mobile Entertainment Business Group Mobile Entertainment Category 10-1, 1chome, Ohwatari-machi, Maebashi-city, Gumma-ken, 371-8543, Japan

(No.MA306SCH)



Printed in Japan  
VPT